



*Small Luxury Hotel*





## *Atzaró Cape Town*

Atzaró Cape Town is a Small Luxury Hotel at the foot of Table Mountain, boasting stunning panoramic 360 views of the national park, the mountain, the city bowl, Lion's head, Devil's peak and beyond. It consists of six suites, multiple living and dining areas, studies, kitchen, wellness area, gym, sauna, numerous terraces and decks, outdoor kitchen, braai-style barbeque area and pool. It is a prime location with Table Mountain and the National Park at its doorstep with sensational views.



### *Accommodation*

6 Suites  
9 Bathrooms  
Cloakroom  
Living room  
Dining room  
Kitchen  
Study  
Multiple lounges  
Outdoor dining areas  
Outdoor lounging areas  
Outdoor sunbathing areas  
Terraces

### *Facilities*

Swimming pool  
Wellness area with Yoga & Massage room  
Gym & Sauna  
Braai area  
Utility room  
Office spaces  
Gardens  
Wi-fi  
Internet TVs  
Music system  
Safes  
Air conditioning

### *Included*

Accommodation  
Breakfast  
Initially stocked minibar & suite snacks  
Water, Tea & Coffee  
Personal laundry  
24-hour staff  
City & Safari Concierge services  
Parking for 8 cars

### *Excluded*

All Transfers and Transport  
Lunch and Dinner  
Selected alcohol and drinks  
Spa and Massage treatments

### *Location*

The Atzaró Cape Town Small Luxury Hotel is at the perimeter of the city bowl and at the foot of Table Mountain in the National Park, within Oranjezicht. With no other property behind the hotel, the drama of the mountain is at its doorstep and panoramic 360 views are spectacular all around.



Come experience your very own spacious mountain-side suite at Atzaró Cape Town, Small Luxury Hotel.  
At the perimeter of the city bowl, and foot of Table Mountain, you will find us at this prime location.

Atzaró Cape Town is inviting with an expansive and open feeling, looking over spectacular views. Every suite, living room and terrace are abundant with light and space. Choosing to visit with a loved one, family or friends, you will experience the best of stays. This Small Luxury Hotel spreads across four floors and all suites are framed by stunning views. Enjoy our numerous terraces, poolside braai area, entertaining in the vast living spaces or venturing out to the adjacent Table Mountain National Park.

Whether you start your day in the wellness area, or a hike in the mountain, we are perfectly placed among nature, rich with adventure and outdoor activities.

Our concierge team can help plan your day, whether it is mountain biking, hiking, a cable car ride up Table Mountain, beach horse riding, wine tours and much more.

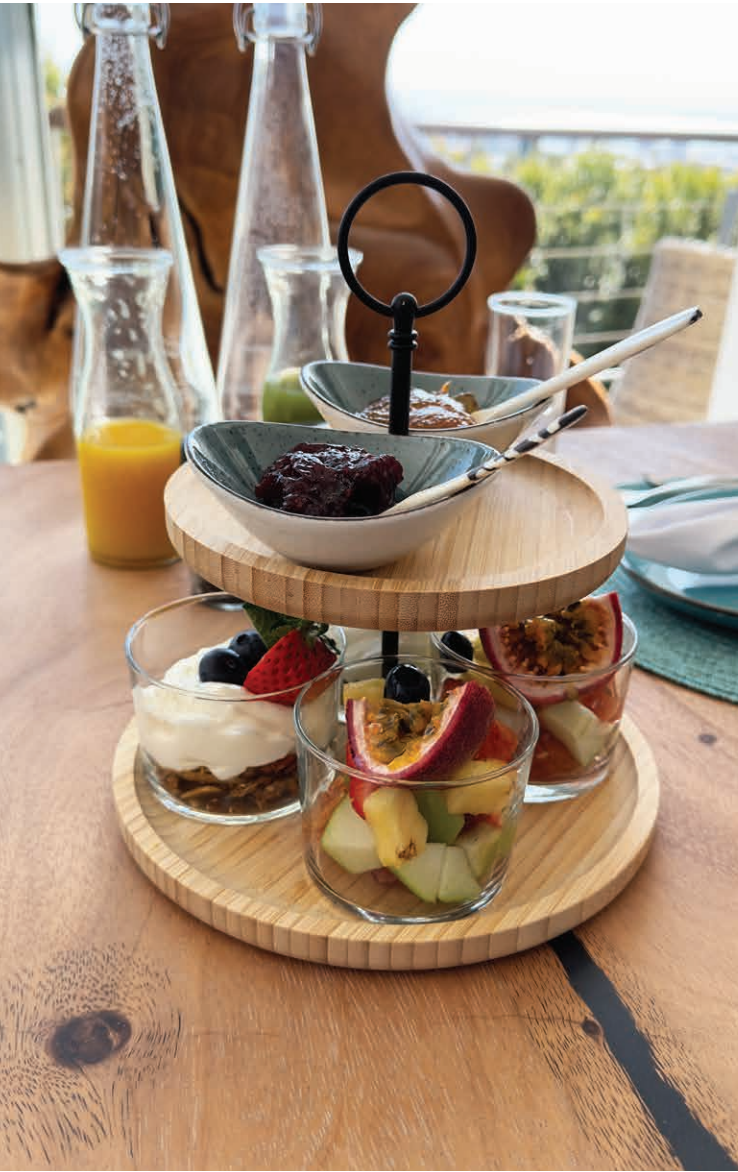


## *Cuisine*

We celebrate the cultural traditions that surround us and place great emphasis on organic living. Our menu features seasonal produce. Daily breakfast is included, with a harvest mini buffet, and an optional hot cooked breakfast.

We source our ingredients locally, supporting our surroundings.

An all-day menu is available for light meals. Each suite has an initially stocked minibar, but a greater variety of wines and cocktails are available in the main living area.





*Suites / Accommodation*



## *Lion's Head Deluxe suite*

Lion's Head is a spectacular top floor luxury deluxe suite comprising of a large bedroom and lounge area, bathroom and two terraces. Panoramic views stretching from the city bowl to Lion's Head. Table Mountain and Devil's peak are breath-taking from the large terraces or light-filled suite within.

Light and space are in abundance with luxury and comfort. There is an adjacent office space on the gallery. Double bedroom with king size bed, internet TV, safe, en-suite bathroom. Large terrace with panoramic mountain views.

---

Deluxe Suite  
180 Degree City & Table Mountain View  
Front & Back Terrace  
Bath & Shower  
2 Guests  
King Size Bed

Internal: 66 sqm  
External: 85 sqm  
Total: 151 sqm

## *Room Amenities*

- 66 sqm (710 sqf)
- King-size bed
- Private terrace
- LED Smart TV
- In-room digital safe
- Ensuite bathroom, with complimentary Terres d'Afrique products
- Bath & Shower
- Initial stocked mini-bar with local products
- Coffee station with Nespresso appliances & snacks
- Big windows allowing allot of natural light
- Concierge services
- Security monitored premises
- Complimentary high-speed wireless internet
- Unlimited local phone calls
- Bath robes, towels & slippers
- Netflix
- Complimentary breakfast
- Indoor & Outdoor dining facilities
- Access to gym & pool facilities
- Spa experience at a fee
- Complimentary laundry & housekeeping
- In-house all day menu at a fee
- Cocktail & wine bar at a fee
- Ample cupboard space
- Turn-down service
- Air-conditioning for cooling or heating



## *Madiba Deluxe suite*

Madiba is a top floor luxurious deluxe suite comprising of a large bedroom and lounge area, bathroom and terrace. The bedroom boasts views across the city bowl in one direction and Table Mountain in the other. Large windows and doors flood the double height space with light and the private terrace is stunning at one with the mountain range. There is an adjacent office space on the gallery. Double bedroom with king size bed, internet TV, safe, en-suite bathroom, large terrace with panoramic mountain views.

---

Deluxe Suite  
180 Degree City & Table Mountain View  
Back Terrace with Mountain View  
Bath & Shower  
2 Guests  
King Size Bed

Internal: 58 sqm  
External: 20 sqm  
Total: 78 sqm

## *Room Amenities*

- 58 sqm (624 sqf)
- King-size bed
- Private back terrace
- LED Smart TV
- In-room digital safe
- Ensuite bathroom, with complimentary Terres d'Afrique products
- Bath & Shower
- Initial stocked mini-bar with local products
- Coffee station with Nespresso appliances & snacks
- Big windows allowing allot of natural light
- Concierge services
- Security monitored premises
- Complimentary high-speed wireless internet
- Unlimited local phone calls
- Bath robes, towels & slippers
- Netflix
- Complimentary breakfast
- Indoor & Outdoor dining facilities
- Access to gym & pool facilities
- Spa experience at a fee
- Complimentary laundry & housekeeping
- In-house all day menu at a fee
- Cocktail & wine bar at a fee
- Ample cupboard space
- Turn-down service
- Air-conditioning for cooling or heating



## *Protea Superior suite*

Protea Superior suite is adjacent to the main living area comprising of bedroom and lounge area and bathroom. The bedroom enjoys views across the city bowl with large windows. Double bedroom with king-size bed, internet TV, safe, en-suite bathroom and city views.

---

Superior Suite  
180 Degree City & Table Mountain View  
City View  
Bath & Shower  
2 Guests  
King Size Bed

Internal: 52 sqm

## *Room Amenities*

- 52 sqm (560 sqf)
- King-size bed
- LED Smart TV
- In-room digital safe
- Ensuite bathroom, with complimentary Terres d'Afrique products
- Bath & shower
- Initial stocked mini-bar with local products
- Coffee station with Nespresso appliances & snacks
- Big windows allowing allot of natural light
- Concierge services
- Security monitored premises
- Complimentary high-speed wireless internet
- Unlimited local phone calls
- Bath robes, towels & slippers
- Netflix
- Complimentary breakfast
- Indoor & Outdoor dining facilities
- Access to gym & pool facilities
- Spa experience at a fee
- Complimentary laundry & housekeeping
- In-house all day menu at a fee
- Cocktail & wine bar at a fee
- Ample cupboard space
- Turn-down service
- Air-conditioning for cooling or heating



## *Marula Superior suite*

Marula Superior suite, on the lower ground level, is a suite with bedroom and bathroom, luxuriously relaxed and light-filled adjacent to a Large terrace with views across the city bowl with large windows. This suite has a private living room. Double bedroom with king-size bed that can be split into two single beds if required, internet TV, safe, en-suite bathroom, Large terrace with city views.

---

Superior Suite  
Lounge area  
Garden View  
Large Terrace  
Bath & Shower  
2 Geusts  
King Size Bed  
Option to split into 2 singles

Internal: 59 sqm  
External: 25 sqm  
Total: 84 sqm

## *Room Amenities*

- 59 sqm (635 sqf)
- King-size bed (option to split into singles)
- Private terrace & private lounge
- LED Smart TV
- In-room digital safe
- Ensuite bathroom, with complimentary Terres d'Afrique products
- Bath & Shower
- Initial stocked mini-bar with local products
- Coffee station with Nespresso appliances & snacks
- Big windows allowing allot of natural light
- Concierge services
- Security monitored premises
- Complimentary high-speed wireless internet
- Unlimited local phone calls
- Bath robes, towels & slippers
- Netflix
- Complimentary breakfast
- Indoor & Outdoor dining facilities
- Access to gym & pool facilities
- Spa experience at a fee
- Complimentary laundry & housekeeping
- In-house all day menu at a fee
- Cocktail & wine bar at a fee
- Ample cupboard space
- Turn-down service
- Air-conditioning for cooling or heating





## *Rooibos suite*

Rooibos Suite, on the lower ground level, is a suite with bedroom and bathroom, luxuriously relaxed and light-filled adjacent to a large terrace with views across the city bowl with large windows. Double bedroom with king-size bed that can be split into two single beds if required, internet TV, safe, en-suite bathroom and city views.

---

Suite  
Garden View  
Terrace  
Shower  
King Size Bed  
Option to split into 2 singles

Internal: 44 sqm  
External: 36 sqm  
Total: 80 sqm

## *Room Amenities*

- 44 sqm (473 sqf)
- King-size bed (option to split into singles)
- Private terrace
- LED Smart TV
- In-room digital safe
- Ensuite bathroom, with complimentary Terres d'Afrique products
- Shower only
- Initial stocked mini-bar with local products
- Coffee station with Nespresso appliances & snacks
- Big windows allowing allot of natural light
- Concierge services
- Security monitored premises
- Complimentary high-speed wireless internet
- Unlimited local phone calls
- Bath robes, towels & slippers
- Netflix
- Complimentary breakfast
- Indoor & Outdoor dining facilities
- Access to gym & pool facilities
- Spa experience at a fee
- Complimentary laundry & housekeeping
- In-house all day menu at a fee
- Cocktail & wine bar at a fee
- Ample cupboard space
- Turn-down service
- Air-conditioning for cooling or heating



## *Mopane & Tamboti Family suite*

### MOPANE

This Family suite has a bedroom and bathroom, adjacent to a two-suite-use private living room with a beautiful terrace. Double bedroom with double bed, internet TV, safe, en-suite bathroom, terrace and garden views.

### TAMBOTI

This Family suite has a bedroom and bathroom, adjacent to a two-suite-use private living room with beautiful terrace city views. Double bedroom with king-size bed that can be split into two single beds if required, internet TV, safe, en-suite bathroom, terrace and garden views.

---

Family Suite  
Communal Lounge area  
Garden View  
Large Garden Terrace  
Shower  
2x Bathrooms  
King Size Bed  
Option to split into 2 singles

Internal: 67 sqm  
External: 45 sqm  
Total: 113 sqm

## *Room Amenities*

- 67 sqm (721 sqf)
- Consists of 2 bedrooms
- King-size bed (option to split into singles) - room 1
- Queen size bed - room 2
- Private terrace
- LED Smart TV in centre lounge
- In-room digital safe
- Ensuite bathroom, with complimentary Terres d'Afrique products
- Shower only in both rooms
- Small kitchenette
- Initial stocked mini-bar with local products
- Coffee station with Nespresso appliances & snacks
- Big windows allowing allot of natural light
- Concierge services
- Security monitored premises
- Complimentary high-speed wireless internet
- Unlimited local phone calls
- Bath robes, towels & slippers
- Netflix
- Complimentary breakfast
- Indoor & Outdoor dining facilities
- Access to gym & pool facilities
- Spa experience at a fee
- Complimentary laundry & housekeeping
- In-house all day menu at a fee
- Cocktail & wine bar at a fee
- Ample cupboard space
- Turn-down service
- Air-conditioning for cooling or heating







## *Wellness Area*

The Wellness area, with yoga room, changing room, massage room and juice bar is the perfect place to relax and unwind, to reflect and restore the mind. The yoga space is large enough for private or small group classes. Your very own private wellness centre with access to a large terrace and poolside lounging is vast.

## *Gym & Sauna*

The gym, part of the wellness area, is a light and airy space equipped with running, cycling and stepping machines. Private fitness, health and workouts at the gym.







### *Gardens & Terraces*

The spectacular panoramic views of Table Mountain, Devil's peak, Lion's head and the City bowl set the scene for the numerous terraces and gardens at the hotel. Every level of the property enjoys terraces or garden laden with spacious lounging zones, daybeds, breakfast tables and dining. The outdoor relaxation is as luxuriously appointed as the indoors at the hotel.

### *Pool & Lounge Area*

The pool terrace is a large decked area with pool, lounge area, daybed sun-lounging area, braai zone and covered dining space. Long lazily relaxed days will be enjoyed here with family and friends. The pool area is a perfect space for socialising and for relaxation with stunning views.



## *Quick Facts*

Small Luxury Hotel

Total Suites: 6

Total number of guests: 14

King size beds: 3 Suites

King beds that can split to 2 singles: 3 Suites

Double bed: 1 Suite

Hotel Size: 1087 sqm | Land Size: 1000 sqm

Location: Oranjezicht, City Bowl, Cape Town

## *Services*

Enjoy the best of services at Atzaró Cape Town. Part of Atzaró Group, the international luxury hospitality brand, quality good service is assured. Your Cape Town holiday is made all the better with in-house services, ensuring a smooth experience.



[info@atzarocapetown.com](mailto:info@atzarocapetown.com) | [www.atzarocapetown.com](http://www.atzarocapetown.com)



@atzarocapetown



Atzaró Cape Town